

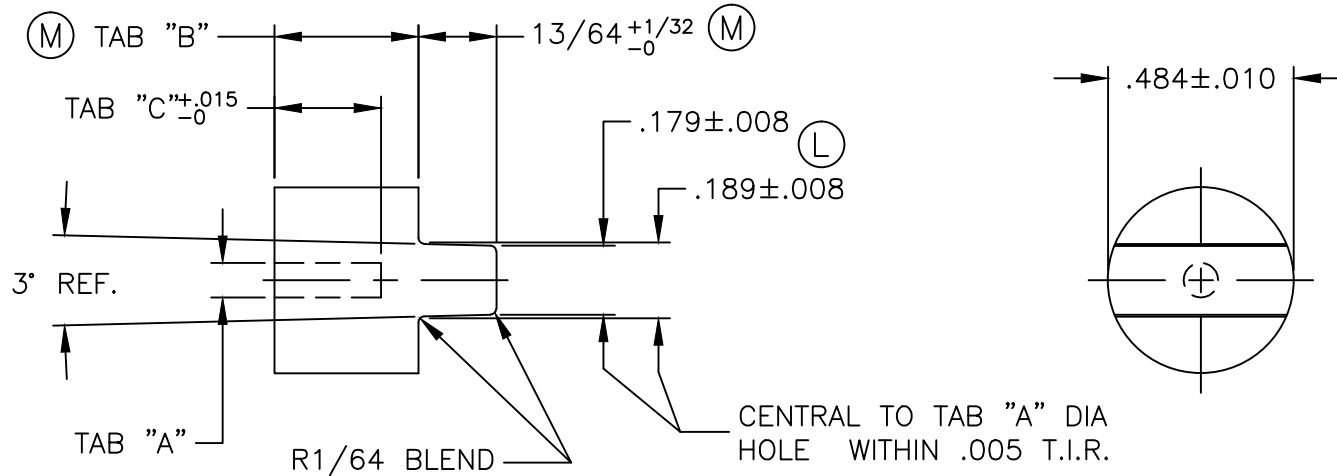
REPORT DRAWING ERRORS TO
ENGINEERING DEPARTMENT

REVISIONS

SHT	REV	DC NO	DESCRIPTION	DATE	APPROVED
--	K	ST-0149	REDRAWN & ADDED NOTE #1	04-10-12	AJP JR.
--	L	ST-0167	CHANGED TOLERANCES	10-02-12	AJP JR.
--	M	ST-0214	CHANGED TOLERANCES	09-23-13	RCK
--	N	--	UPDATED TITLE BLOCK	3/20/15	EG

NOTE:

1. TEST BUTTON REQUIRED WITH ALL SHIPMENTS.



ST-9502-6	NEOPRENE COMPOUND 5601A	60 ± 5	.095/.090	.375	.277
ST-9502-5	SILICONE	65/60	.161/.156	.375	.277
ST-9502-4	NEOPRENE	80 ± 5	.161/.156	.490	.392
ST-9502-3	SILICONE	65/60	.095/.090	.562	.464
ST-9502-2	SILICONE	65/60	.161/.156	.490	.392
ST-9502-1	SILICONE	65/60	.095/.090	.375	.277
PART NO.	MATERIAL	DUROMETER	TAB "A"	TAB "B"	TAB "C"

UNLESS OTHERWISE SPECIFIED THESE NOTES APPLY

1. TOLERANCES: .XXXX ± .0005, .XXX ± .005, .XX ± .01, ANGLE ± 0°30', FRACTIONAL ± 1/64
2. SHARP CORNERS AND EDGES BROKEN WITH .005 R OR CHAMFER.
3. DIAMETERS MUST BE CONCENTRIC TO C DIA. WITHIN .005 TIR.
4. ALL MALE THREADS MUST BE NATIONAL FORM CLASS 3 FIT.
5. ALL FEMALE THREADS MUST BE NATIONAL FORM CLASS 2 FIT.

SERVOTEK PRODUCTS, INC.

NEWELL, W. V.

MAT'L SEE TABLE	HEAT TREAT	FINISH	DWN BY P.W.	CHK BY CAP
ORIGINALLY DESIGNED FOR A.S.D.		SCALE 2:1	SHEET 1 OF 1	DATE 3-11-60
PART NAME COUPLING		DWG. NO. ST-9502-[]	DATE 2-6-61	
			REV. N	