

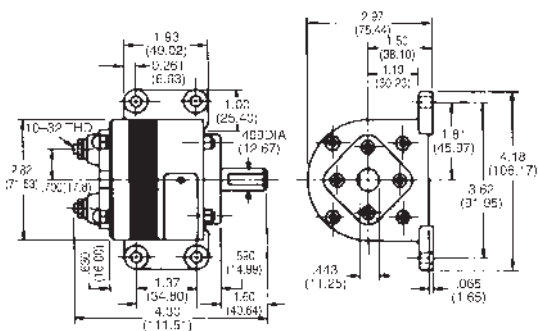


Base Model Tachometer

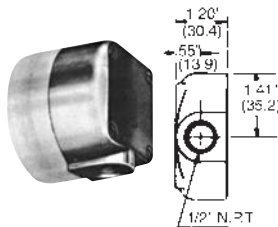
ORDERING INFORMATION

MODEL NUMBER	DESCRIPTION
758-9901000	758 Type AB Tachometer-Generator for Voltage-Responsive Systems
758-9901001	758 Type ABF Tachometer-Generator for Frequency-Responsive Systems
ACCESSORIES	
9933-0143157	Binding Post Cover Box

DIMENSIONS (INCHES/MILLIMETERS)



BINDING POST COVER BOX



The **758 Series** of tachometers all use a multi-pole cylindrical magnet turning in a wound stator constructed from quality transformer iron lamination. Single phase output current is a sine wave over the speed range of the tachometer. These units have 100 ohm stators and are intended for voltage responsive systems. When greater accuracy is required, use a tachometer having a 32 ohm stator (designation F in the type number) and a frequency responsive indicating system. For speeds over 5,000 rpm, use the bearingless AC generators on page 339.

Rigid cast-aluminum base; light-weight, dust-proof aluminum alloy housing. 1/2" diameter shaft extension for direct coupling drive, pulley, chain and sprocket, or spur gear. Two binding posts for electrical connection.

Approximate torque: 2.5 oz.-in. starting, 2.5-oz.-in. running (1000 RPM).

**Binding Post Cover Box:** Available for Types AB, JB2 and KB3 (both voltage and frequency-responsive models). Provides protection for terminals, and has a 1/2" NPT connection for conduit. Cat. No..

SPECIFICATIONS

VOLTAGE OUTPUT AT 1000 RPM	10 Volts AC $\pm 1\%$ Per 1000 RPM Open Circuit	
ACCURACY	$\pm 1\%$	
EMF LINEARITY 1	Dependent Upon Load and Speed	
PERMISSIBLE CURRENT DRAIN	150 mA	
FREQUENCY AT 900 RPM	60 Hz Sine Wave	
ALLOWABLE END PLAY	0.005"	
MAX OPERATING TEMPERATURE	250°F	
INTERNAL RESISTANCE AT 25°C	Standard Unit	100 $\Omega$ $\pm 1\%$
	F. Type Unit*	32 $\Omega$ $\pm 20\%$
INSULATION	Insulation Class 105	
ROTOR	Alnico V, 8 Poles	
STATOR	8 Poles	
BEARINGS	Ball	
TEMPERATURE COEFFICIENT	Standard Unit	0.2% Per 10°C Change
	F. Type Unit*	Not Compensated, 0.4% Per 10°C Change
MIN. SPEED	500 RPM	
MAX. TOP SPEED	5000 RPM	
STARTING TORQUE	2.0-3.0 oz. ins.	
RUNNING TORQUE AT 1000 RPM	2.3 oz. ins.	
SHAFT DIAMETER	1/2"	
SHAFT CONNECTION	Direct, Geared or Belt	
SHAFT LENGTH	1" (w/.87 Flat)	
ELECTRICAL CONNECTION	10-32 Studs	
MOUNTING	Base	
ENCLOSURE	Dust Resistant	
MEASUREMENTS	4.39" L x 2.97" H x 2.82" W	
WEIGHT	2.89 lbs. (1.31 kg.) Approximate	

\*F-Type generators for use in frequency responsive systems only. any of the above types can be supplied for use in frequency systems