



LISTED

File #E102224

The **Model 750 DC Tachometer-Generator** embodies a permanent magnet field surrounding a rotating armature. The commutator segments are made from a special non-corrosive alloy which has an exceptionally long life. The brushes are of a self-lubricating material and are carried in a self-aligning holder which equalizes the pressure of both brushes. The armature shaft rotates on ball bearings which under normal operation do not need lubrication for 15,000 hours running time or approximately 3 years, which-ever comes first. Maximum recommended speed is 5,000 rpm. Brush life is greatest at the lower speeds.

Rigid, heavy-duty cast-iron housing and mounting base. 3/4" diameter shaft, supported by heavy-duty ball bearings. Includes conduit junction box with 1/2" N.P.T. opening suitable for flexible conduit, mountable in anyone of four positions. This unit is listed by Underwriter laboratories for use in hazardous locations Division 1 (vapors exist continuously), Class 1, Group D (natural gas or the vapors from lacquer solvents, acetone, alcohols, and petroleum derivatives), and Class 2, Groups F and G (carbon black, coal or coke dust, grain dust, etc.).

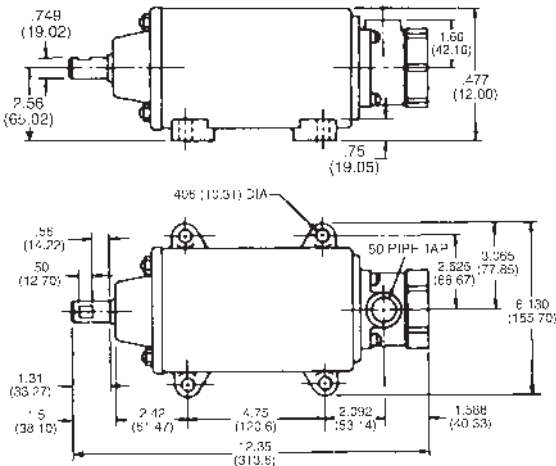
Approximate torque. 2.0 oz.-in. starting, 2.0 oz.-in., running (1000 RPM).

Explosion-Proof Tachometers/Generators

ORDERING INFORMATION

MODEL NUMBER	DESCRIPTION
750-9905001	750-E Tachometer-Generator

DIMENSIONS (INCHES/MILLIMETERS)



SPECIFICATIONS

VOLTAGE OUTPUT AT 1000 RPM	6 Volts ±1% Per 1000 RPM
ACCURACY	±1%
EMF LINEARITY 1	±0.15%
PERMISSIBLE CURRENT DRAIN	50 mA
MAX RMS VALUE OF AC RIPPLE	2%
ALLOWABLE END PLAY	.005"
MAX OPERATING TEMPERATURE	250°F
INTERNAL RESISTANCE AT 25°C	20 Ω ±2%
NUMBER OF BRUSHES	2 Per Set
COMPOSITION OF BRUSHES	Palladium Silver Alloy
ARMATURE	12 Bars, 12 Slots
INSULATION	Insulation Class 105
HI-POT TEST	500 Volts for 1 Min.
BEARINGS	Ball
TEMPERATURE COMPENSATION	0.1% Per 10°C Change
NORMAL CONTINUOUS SPEED	2000 RPM
MIN TOP SPEED	100 RPM
MAX SPEED 2	5000 RPM
STARTING TORQUE	2.0 oz. ins.
RUNNING TORQUE	2.0 oz. ins.
SHAFT DIAMETER	3/4"
SHAFT CONNECTION	Direct, Geared or Belted
SHAFT LENGTH	1-1/2"
ADJUSTABLE MAGNETIC SHUNT RANGE	±4%
DIRECTION OF ROTATION EFFECT	±0.6%
MOUNTING	Base
ENCLOSURE	Explosion-Proof
MEASUREMENTS	12.35"L x 4.77"H x 6.13"W
WEIGHT	24.5 lbs.